

MONTHLY MEMBERSHIP PROGRESS REPORT

LOCATION INDIA

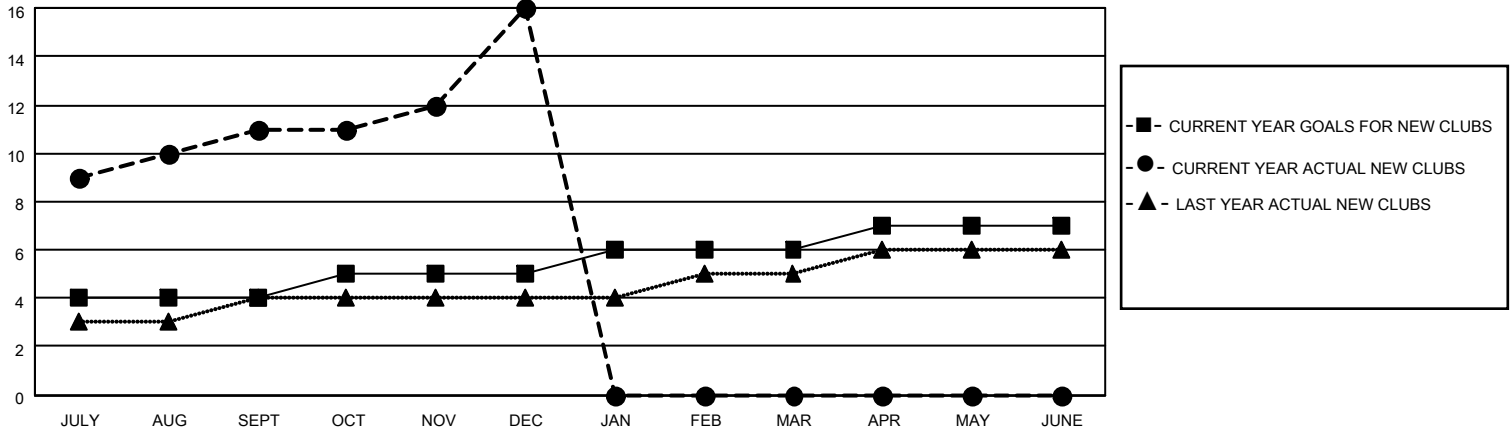
District 321A2

Results as of: 12/31/2020

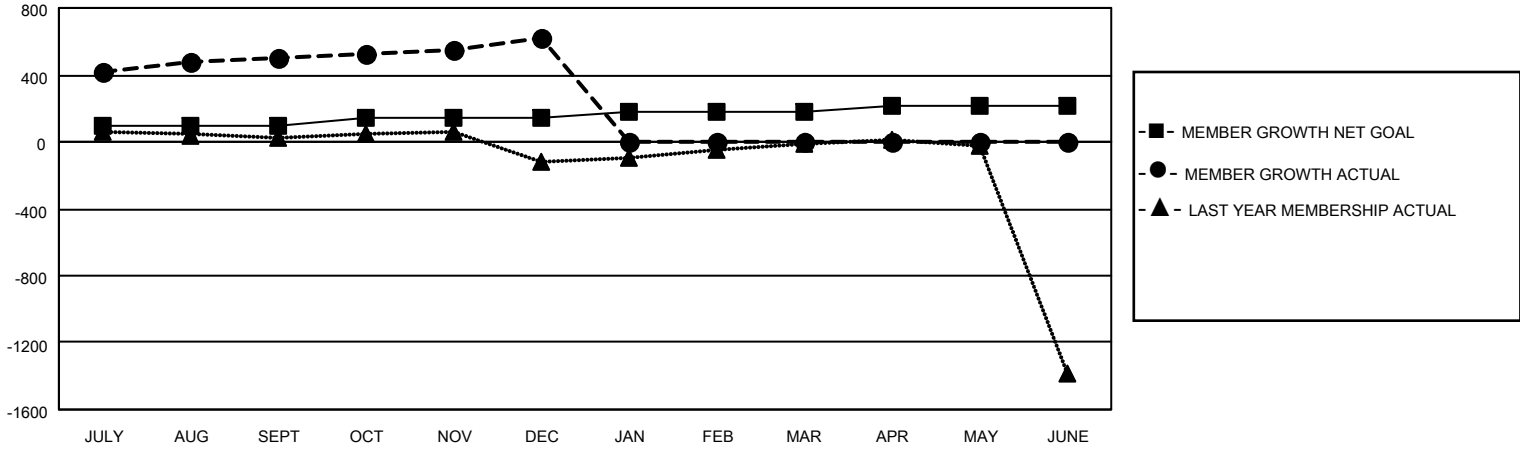
Clubs			
RESULTS FOR 2020-2021			
QUARTER	NEW CLUB GOAL	NEW CLUBS	DROPPED CLUBS
JULY/AUG/SEPT	4	11	2
OCT/NOV/DEC	1	5	1
JAN/FEB/MAR	1	0	0
APR/MAY/JUNE	1	0	0

Members			
RESULTS FOR 2020-2021			
QUARTER	MEMBER GROWTH NET GOAL	MEMBER GROWTH ACTUAL	DROPPED MEMBERS ACTUAL (including transfers)
JULY/AUG/SEPT	100	775	80
OCT/NOV/DEC	40	313	161
JAN/FEB/MAR	40	0	0
APR/MAY/JUNE	40	0	0

GOALS AND ACTUAL NEW CLUBS CUMULATIVE



GOALS AND ACTUAL MEMBERS CUMULATIVE



DROPPED CLUBS: 3

86 CLUBS OF 154 ADDED 1 OR MORE NEW MEMBERS

GENDER DISTRIBUTION

MALE 2,379 (67.07%)
FEMALE 1,168 (32.93%)

DROPPED MEMBERS

[CLICK HERE FOR CUMULATIVE MEMBERSHIP DATA](#)

DECEASED	13
CLUB CANCELLED	10
OTHER	217
TOTAL	240

TOTAL FAMILY UNIT MEMBERS	2,324
FAMILY MEMBERS PAYING HALF DUES	1,323